



NeSSI²

A graphic element for the NeSSI² logo, consisting of a green and white globe with a red square on its surface.

How-To

Version 2.0.0-beta.2



Editors:

Karsten Bsufka and Rainer Bye

Contributors:

Arik Messerman

Katja Luther

Stephan Schmidt

Joël Chinnow

Dennis Grunewald

Thomas Hauschild

Sebastian Linkiewicz

Thorsten Rimkus

Jakob Strafer

DAI-Labor der Technischen Universität Berlin

Prof. Dr.-Ing. habil. Sahin Albayrak

Technische Universität Berlin / DAI-Labor

Institut für Wirtschaftsinformatik und Quantitative Methoden

Fachgebiet Agententechnologien in betrieblichen Anwendungen und der Telekommunikation

Sekretariat TEL 14

Ernst-Reuter-Platz 7

10587 Berlin

Telefon: (030) 314 74000

Telefax: (030) 314 74003

E-mail: Sekretariat@dai-labor.de

WWW: <http://www.dai-labor.de>

Contents

List of Figures	v
1 Workflow	1
2 Create NeSSi Project	3
3 Open <i>NeSSi</i>² Explorer	5
4 Create a Simple Network	7
5 Create Profile	9
6 Create Scenario	11
7 Create Session	13
8 Run Simulation	15

List of Figures

1.1	Workflow	1
2.1	Create NeSSi Project	3
3.1	Open <i>NeSSi</i> ² Explorer	5
4.1	Create Simple Network	7
5.1	Create Profile	9
6.1	Create Scenario	11
7.1	Create Session	13
8.1	Run Simulation	15

1 Workflow

If you start from the beginning, these are the steps to follow to create and start a simple simulation.

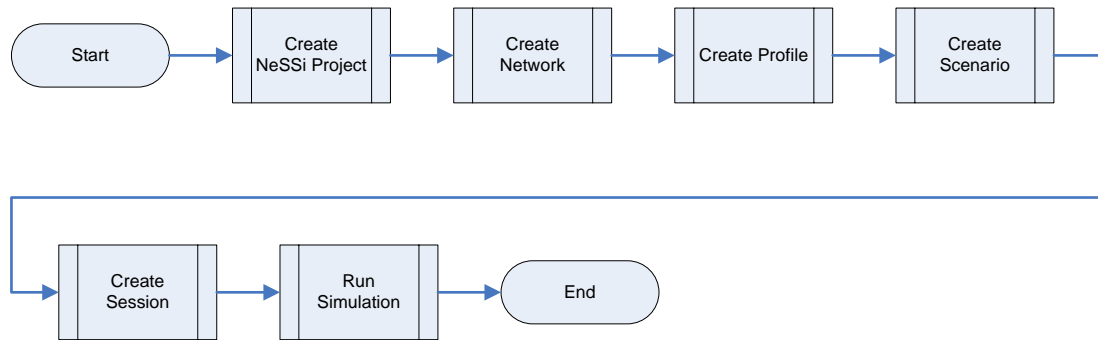


Figure 1.1: Workflow

2 Create NeSSi Project

First of all you need to create one (or more) *NeSSi*² project(s). The following picture depicts how this is done in detail.

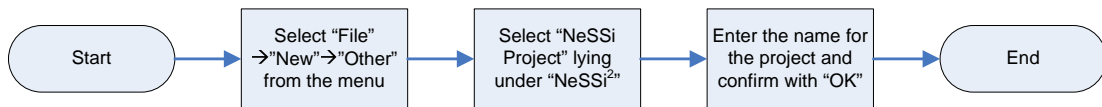


Figure 2.1: Create NeSSi Project

3 Open *NeSSi*² Explorer

You may open the *NeSSi*² Explorer view in several ways. You may either open it directly via the *Show View* dialog or switch to one of the appropriate perspectives. The following diagram depicts this a little bit clearer.

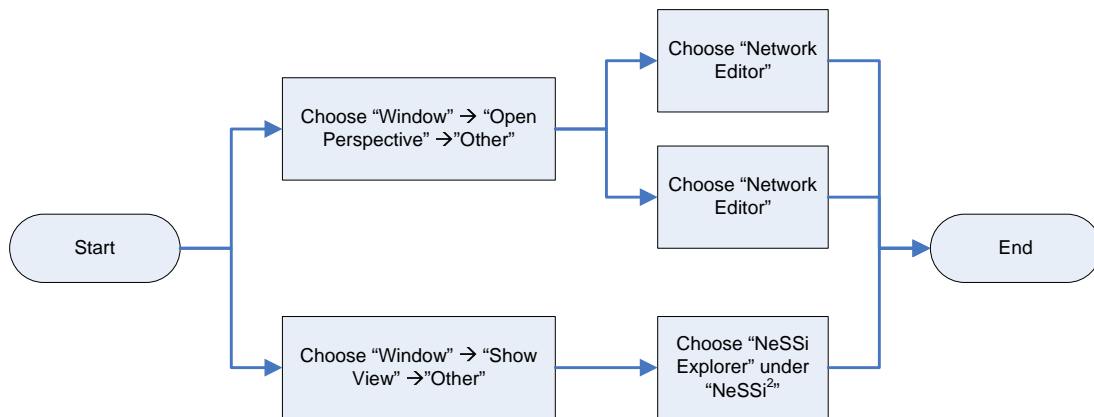


Figure 3.1: Open *NeSSi*² Explorer

4 Create a Simple Network

After setting up a project for all the *NeSSi*² stuff, you should create a network.

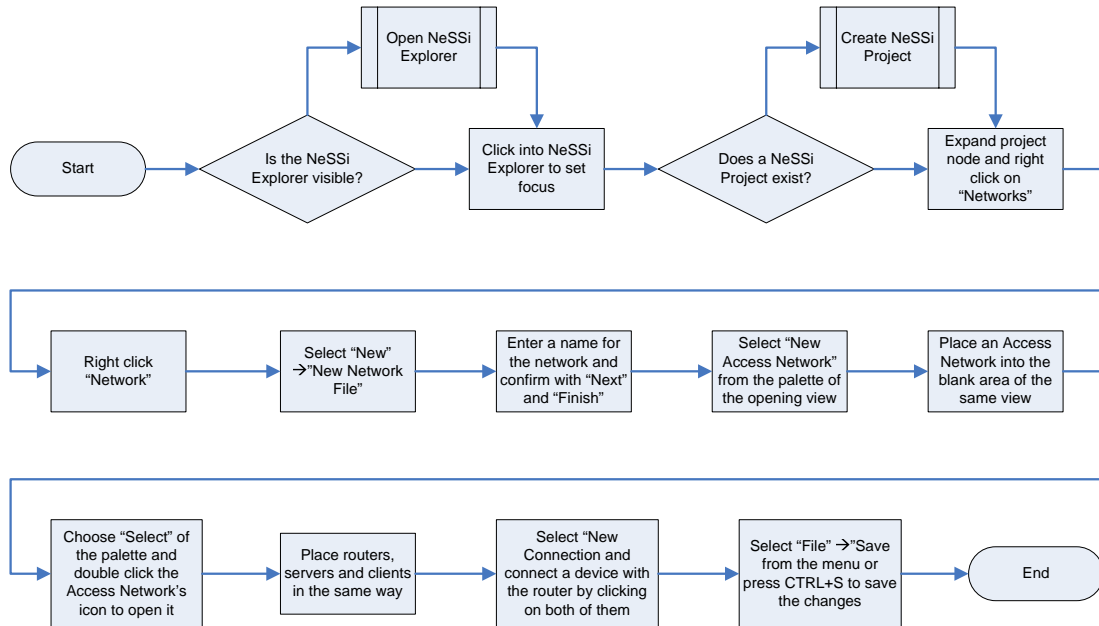


Figure 4.1: Create Simple Network

5 Create Profile

Profiles contain a bunch of applications that may be deployed together in this way. How a profile is created is shown in the following picture.

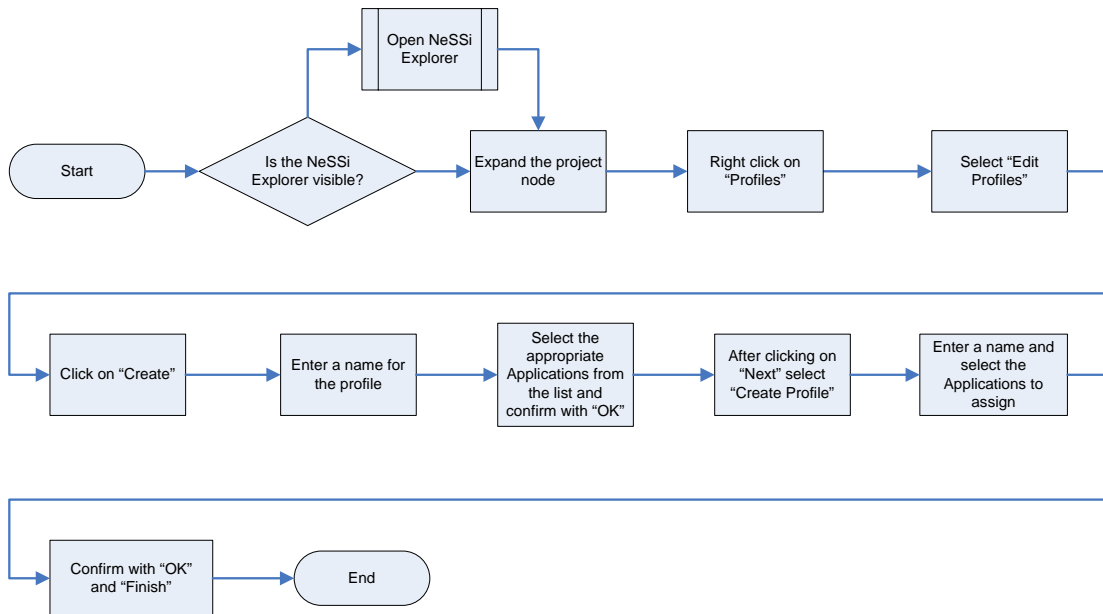


Figure 5.1: Create Profile

6 Create Scenario

A scenario describes the configuration of a network. Several of them may be bundled within a session. The scenario cannot be simulated directly. You need to create a session containing the scenario first. The following picture describes the creation process of a scenario.

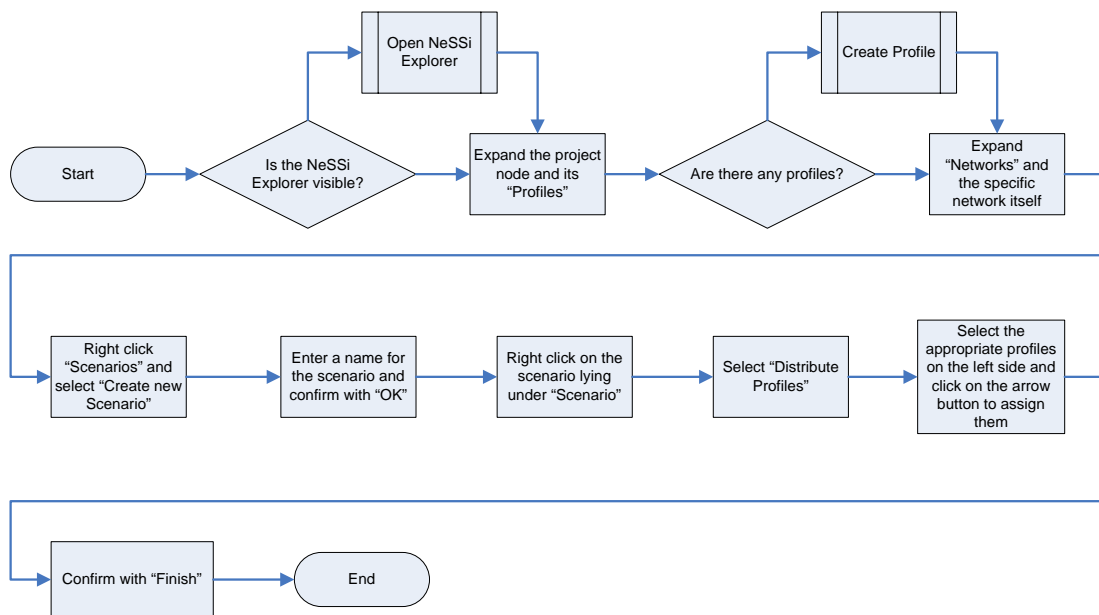


Figure 6.1: Create Scenario

7 Create Session

In a session, several scenarios are bundled. The number of ticks to simulate and the number of simulations are configured within a session. How to create a session is depicted in the following picture.

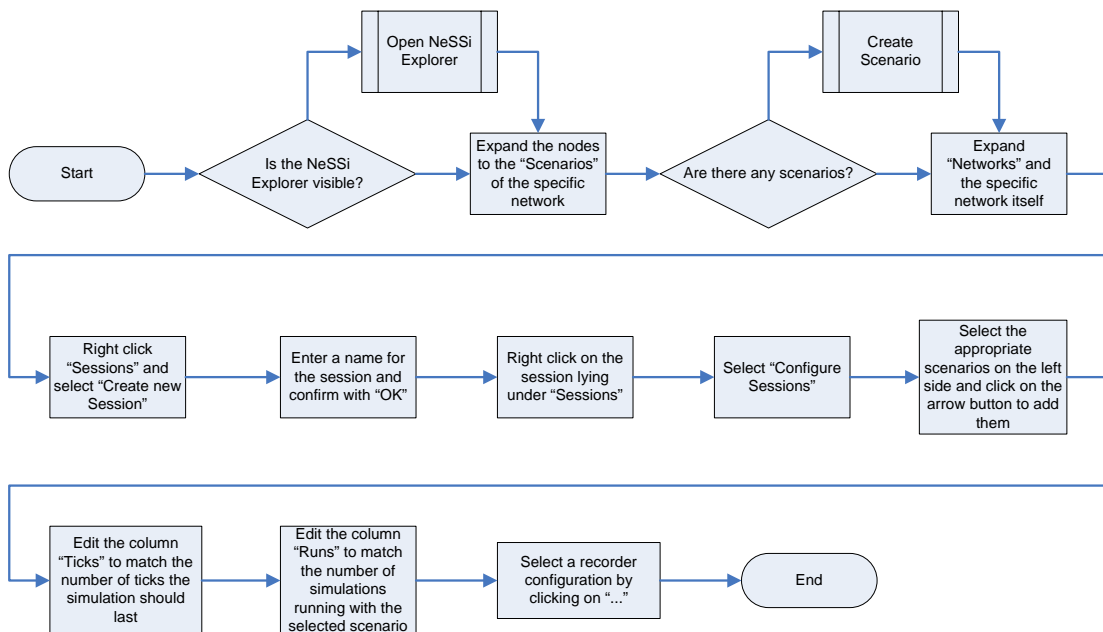


Figure 7.1: Create Session

8 Run Simulation

To run the simulation of a configured session, you need to select *Launch Session* from the context menu of the session node within the *NeSSi²* Explorer.

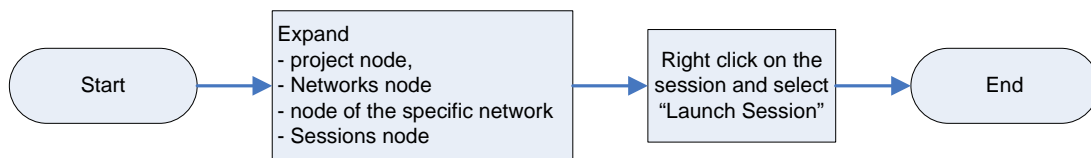


Figure 8.1: Run Simulation

